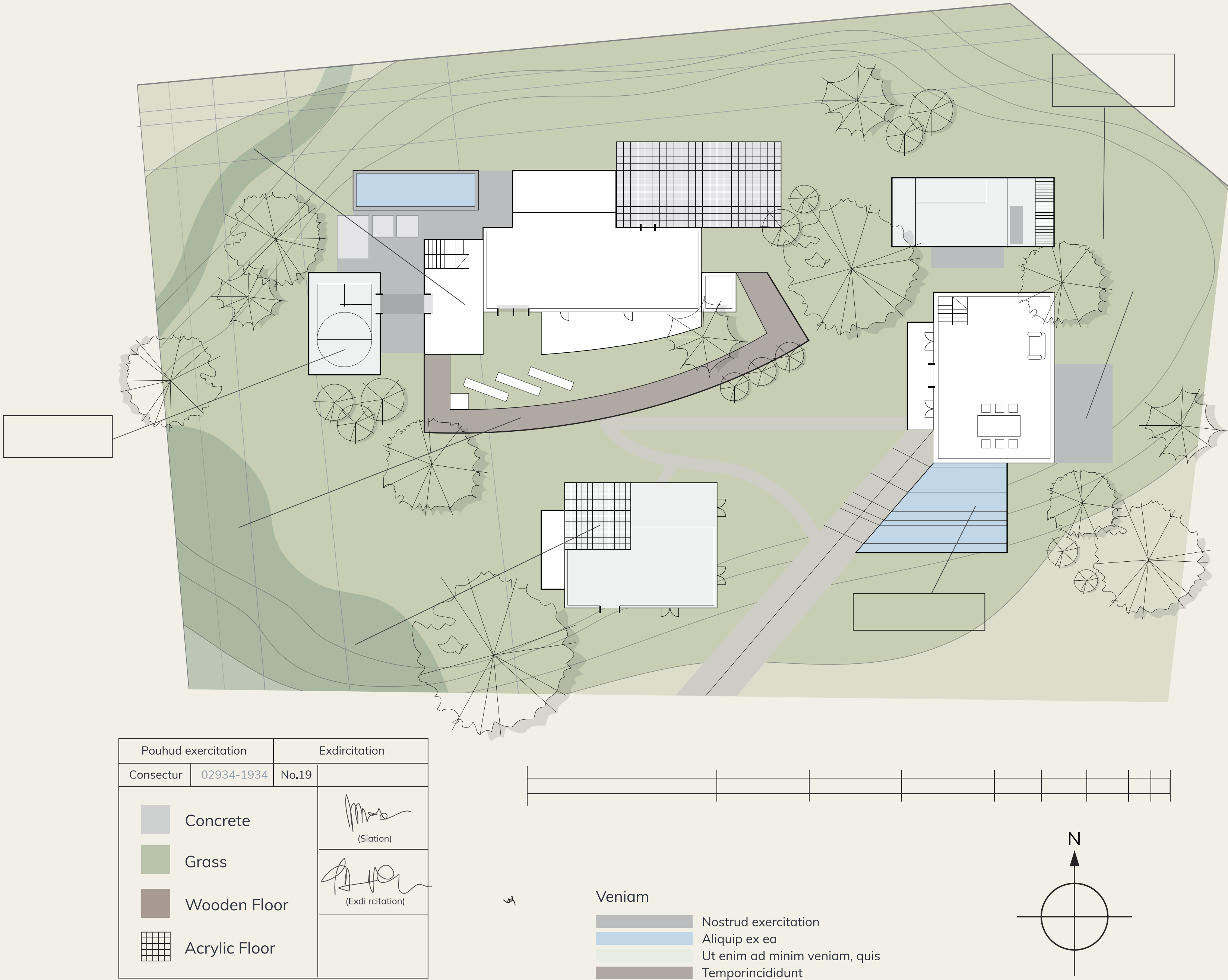


The Garden Terrace

- Area:** 150 m² (Outdoor).
- Max Guests:** 100 (Cocktail) / 60 (Seated).
- Ideal For:** Conferences, business meetings, training sessions, workshops.
- Features:**
- Beautiful landscaped setting.
 - Fairy lights and garden lanterns.
 - Lounge-style seating or formal setup.
 - Portable speaker system available.
 - Optional tent or canopy for shade/rain.
 - Garden-to-table catering service.
 - Adjacent indoor bar access.
 - Ambient sunset lighting.
 - Photo-friendly atmosphere.
 - Personalized décor options.



Bask in natural beauty as you host unforgettable moments on The Garden Terrace. Surrounded by serene greenery and soft ambient lighting, it’s a perfect choice for charming outdoor gatherings that feel both relaxed and refined.